



EF STEM

## STEM Discovery: London

From code breaking and criminal investigations to the cryptic creation of Stonehenge, London is a prime spot for problem solvers and inquiring minds. Your job on this tour? Ask a lot of questions.

Let STEM be your guide during your exploration of London. Uncover secret messages at Bletchley Park, the birthplace of modern information technology. Practice your sleuthing skills during a CSI-inspired forensics workshop. And plant your feet on two different hemispheres at the Royal Observatory in Greenwich, with the English capital as your backdrop.

# Explore a world built on STEM

Science, Technology, Engineering, and Math shape communities across the globe. Our STEM-focused tours showcase the value of diverse ways of thinking and building, while also highlighting the powerful universality of STEM subjects. At EF, we've spent over 55 years witnessing the power of educational travel, and we know how it can transform STEM learners. Each STEM tour challenges travelers to think critically, and helps students develop innovative solutions to global problems.

At Bletchley Park, discover how code breakers used math to decipher secret messages, such as those transmitted by this Enigma machine during World War II.



## What to expect on a STEM tour

### EXPERIENTIAL LEARNING

Apply STEM principles by participating in project-based learning that goes well beyond theory.

### INNOVATIVE LOCATIONS

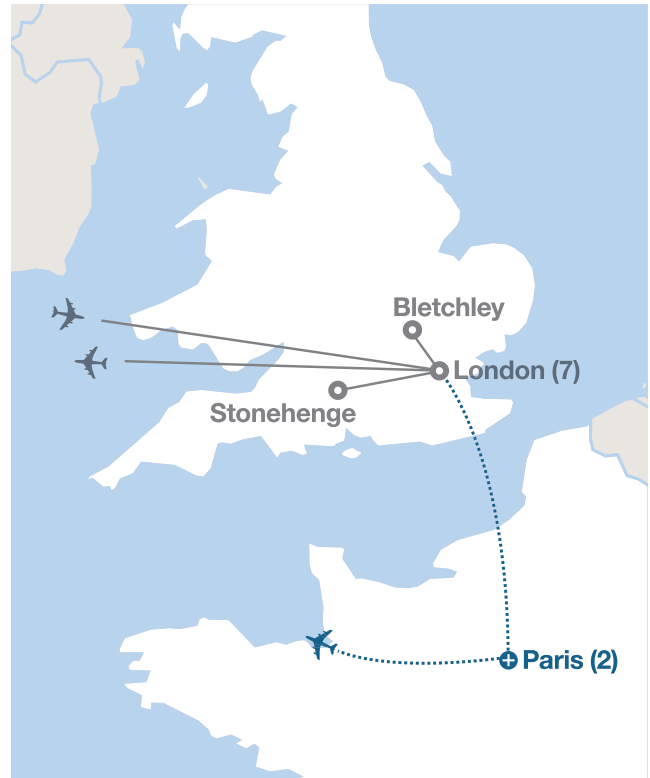
Tour exciting international destinations that host some of the world's most advanced laboratories, universities, and companies, or are simply perfect global "classrooms" to study analytical issues of the day in real life.

### INDUSTRY EXPERTS

Collaborate and learn with scientists, engineers, researchers, and other STEM practitioners in the field.

### YOUR EXPERIENCE INCLUDES

Full-time Tour Director; sightseeing tours; entrance fees for London Eye, Science Museum/Natural History Museum, forensics workshop, Stonehenge, Tower of London, theater show, Bletchley Park, Thames River cruise, Royal Observatory; round-trip flights; 7 overnight stays in hotels (9 with extension); breakfast and dinner daily



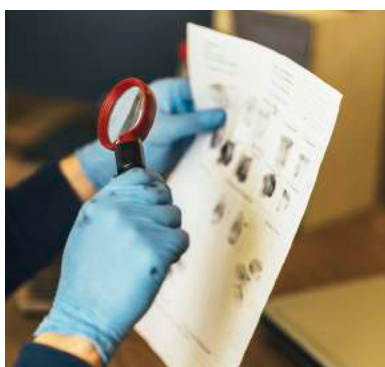
“I love when my students see the benefits of their discovery and creation—I think it is important for them to see others in that career.”

Victoria O., Science Department Chair



^

Take in views of Big Ben, London's world-famous clock, on a guided tour.



<

Become a detective for a day during an interactive forensics workshop.

### Days 1–2: Fly to England

Fly overnight to London and meet your Tour Director at the airport. Take a walking tour of the city and ride the London Eye, a large Ferris wheel along the River Thames that offers panoramic views of the city.

### Day 3: London

See St. Paul's Cathedral, Big Ben, and Buckingham Palace on an expert-led tour of England's capital. In the afternoon, your group can choose to visit either the Natural History Museum or the Science Museum. Tonight, follow in the footsteps of London's famous 19th-century serial killer, Jack the Ripper, on a walking tour.

### Day 4: London

Today, channel the spirit of CSI while you explore forensic science. Learn criminal investigation skills—such as fingerprint analysis and crime scene assessment—during an interactive workshop. Then, get your questions answered by local forensics experts who are driving important innovations in the field.

### Day 5: Stonehenge | London

Stonehenge's origin is an unsolved mystery. Your morning activity lets you create your own version of the famous circle as you learn about the challenges involved in moving and arranging the heavy stones. Then see the prehistoric landmark for yourself.

### Day 6: London

Visit the Tower of London, a medieval castle and former prison, to hear the stories behind its stone façade. Then explore the city on your own before attending a theater performance.

### Day 7: Bletchley Park | London

At Bletchley Park, home of British code breaking, learn about the role math can play in the world of secrets and spies, and how it affected the outcome of World War II. Try your hand at cracking codes during an interactive workshop, and see the giant Colossus computer that broke the Enigma code.

### Day 8: London

Cruise along the Thames to Greenwich, where you'll visit the Royal Observatory. Stand on the Prime Meridian, dividing the world's hemispheres, and see astrological attractions that include a 4.5-billion-year-old meteorite and an octagonal room designed for stargazing.

### Days 9–11: Return home or add extension

Depart for home on Day 9 or extend your trip to Paris. On a guided tour, see the Place de la Concorde, the Arc de Triomphe, and the Eiffel Tower. You'll also meet the *Mona Lisa* at the Louvre, and get to catch a glimpse of Notre-Dame.

# The world leader in international education

For over 55 years, EF has been working toward one global mission: *Opening the World Through Education*. Your teacher has partnered with EF because of our unmatched worldwide presence, our focus on affordability, and our commitment to providing experiences that teach critical thinking, problem solving, collaboration, and global competence.

## **AFFORDABILITY**

Every student should have the opportunity to travel, which is why we're dedicated to providing the lowest prices.

## **INSIGHT**

We believe in experiential learning at the most important sites. Your Tour Director is with you at every step, providing their own perspective and local tips.

## **SAFETY**

We're committed to your safety. With 600+ schools and offices in over 50 countries, EF staff can react quickly and in person wherever you travel.

## **THE EASIEST WAYS TO ENROLL TODAY**

### **Enroll online**

[eftours.com/enroll](https://eftours.com/enroll)

### **Enroll by phone**

800-665-5364

### **Mail your enrollment form**

EF Educational Tours  
Two Education Circle  
Cambridge, MA 02141