



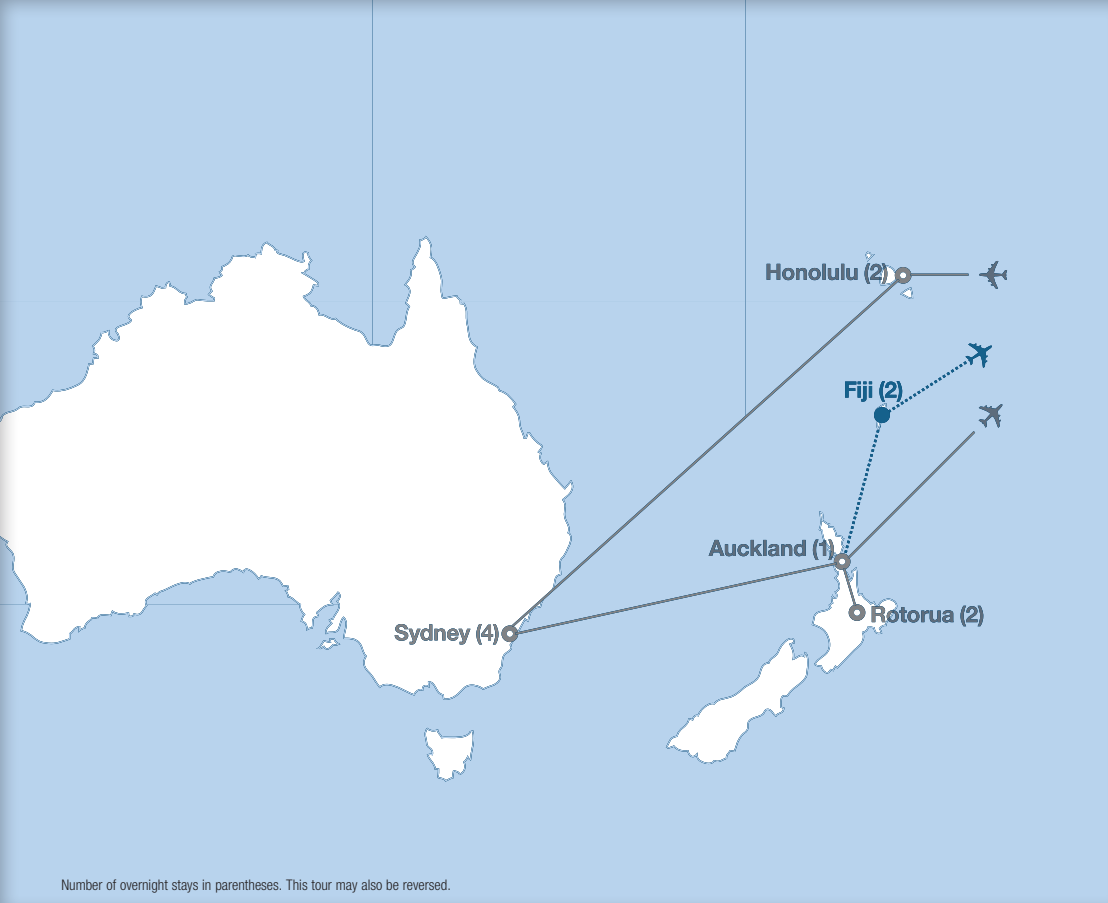
**Educational
Tours**

The South Pacific

12 or 14 days | Hawaii | Australia | New Zealand | Extension to Fiji

Rotorua





Number of overnight stays in parentheses. This tour may also be reversed.

Top things to see on tour:



USS Arizona Memorial



Sydney Wildlife World



Agrodome



Sydney Harbour cruise



Fiji

The South Pacific

12 or 14 days | Hawaii | Australia | New Zealand | Extension to Fiji

The South Pacific is known for its scenery, its unique wildlife, and its key role in 20th-century events. Honolulu adds an exotic dimension to the American story—honor its WWII history at the USS Arizona Memorial. Get a taste of Australia in Sydney, from kangaroos to the Opera House. In New Zealand, see dramatic geological features and engage with the indigenous Maori culture.

Everything you get:

- Round-trip flights
- Full-time Tour Director
- Comfortable motorcoach; Internal flights
- 9 overnight stays in hotels with private bathrooms (11 with extension)
- Breakfast daily; 6 dinners (7 with extension)
- 2 sightseeing tours led by licensed local guides; 2 sightseeing tours led by your Tour Director; 1 walking tour
- Entrance to:** USS Arizona Memorial; Sydney Tower; Harbor Cruise; Sydney Wildlife World; National Opal Collection; Rotorua Duck Tour; Whaka geothermal area; Whaka Maori Village; Skyline Gondola; Agrodome

You can add optional activities to your tour. Additional costs apply.

Day 1: Fly to Hawaii

- Meet your Tour Director at the airport

Day 2: Honolulu

- Take a guided tour of Honolulu: King Kamehameha Statue; Punchbowl Cemetery
- Visit the USS Arizona Memorial

Day 3: Honolulu | Overnight flight

- Enjoy a free day in Honolulu
- *Optional: Hanauma Bay snorkeling*
- Depart for overnight flight

Day 4: Fly to Sydney

- In flight: Cross the International Date Line

Day 5: Sydney

- Arrive in Sydney
- Take a walking tour of The Rocks

Day 6: Sydney

- Take a tour of Sydney
- Visit Sydney Tower
- Take a harbor cruise
- Visit Sydney Wildlife World
- Visit the National Opal Collection

Day 7: Sydney

- Enjoy a free day in Sydney
- *Optional: Blue Mountains of Katoomba*

Day 8: Sydney

- Enjoy a free day in Sydney

Day 9: Sydney | Auckland

- Fly to Auckland

Day 10: Auckland | Rotorua

- Take a tour of Auckland
- Travel to Rotorua
- Take a Rotorua Duck Tour
- Enjoy a Hangi dinner

Day 11: Rotorua

- Take a guided tour of Rotorua
- Visit Whaka geothermal area
- Visit the Whaka Maori Village
- Ride the Skyline Gondola
- See a jade-carving demonstration

Day 12: Rotorua | Depart for home

- Visit the Agrodome
- Travel to Auckland for flight home
- Recross the International Date Line

2-DAY TOUR EXTENSION

Days 12-13: Fiji

- Fly from Auckland to Fiji
- Enjoy free time in Fiji

Day 14: Depart for home

- Recross the International Date Line

Sydney

It's easy to see why this stunning, cosmopolitan city won the hearts of many as the host of the 2000 Olympic Games. Enjoy a bird's-eye view of the city from the observation deck of Sydney Tower. At 1,063 feet, it's the second-tallest building south of the equator! See the skyline from a different angle on your boat tour of Sydney Harbour—and snap a picture of the iconic Opera House. Stop at Bondi Beach to get up-close to koalas and kangaroos at Sydney Wildlife World. Then, shop for souvenirs in the historic Rocks district. Situated in the shadow of the Sydney Harbour Bridge, this well-preserved colonial neighborhood marks the spot where Australia's first fleet of European settlers landed in 1788.



City skyline
Sydney, Australia



Hot mud spring
Rotorua, New Zealand

Rotorua

Geothermal activity and Maori culture have made Rotorua a major travel destination. Hop on board an amphibious duck boat for a tour of Rotorua's historic landmarks and natural wonders. A Maori guide leads you through the geothermal Whakarewarewa area, where you can marvel at bubbling pools of mud, crystal springs of hot mineral water, geysers and richly colored craters. At the Maori Village, you'll hear about Maori legends and tribal customs. Later, enjoy Maori song and dance at a traditional Hangi dinner. And did you know that New Zealand is home to over 55 million sheep? Learn more during a sheep-shearing demonstration at the world-famous Agrodome. Then, cap off your visit with a ride on the Skyline Gondola.

Honolulu

Discover the white sand beaches, active volcanoes, sugar cane fields and dramatic sunsets of Honolulu. See downtown with a local guide, passing by the statue of King Kamehameha, one of Oahu's early leaders. Visit the Punchbowl Cemetery, burial site of thousands of American veterans, set inside the crater of an extinct volcano. Then, continue to Pearl Harbor and the *USS Arizona* Memorial to honor the men who died aboard the battleship in the attack on Pearl Harbor on December 7, 1941. Today, a simple white memorial spans the ship's remains and the men entombed within it. You'll also have some free time to explore Honolulu as you wish—make sure to taste a delicious Hawaiian pineapple!



Honolulu beach
Honolulu, Hawaii

Travel transforms lives

EF is #1 in educational travel.

EF is the most reputable student travel organization, with 45 years of experience and schools and offices in more than 50 countries.

We guarantee the lowest prices because we believe in making travel possible for everyone.

All of our itineraries are educational, featuring experiential learning activities and visits to the best sites. Expert local guides add in-depth knowledge along the way.




We are committed to your safety. We have hundreds of offices around the world, with local staff who can assist your group anywhere you travel. Plus, parents can always reach us 24 hours a day at our headquarters.

Your 24-hour Tour Director stays with your group around the clock on tour, providing insight about your destination as well as great tips.

Online reviews from travelers. We ask every teacher, student and parent to review their EF tour experience. Reviews are online at eftours.com/reviews.

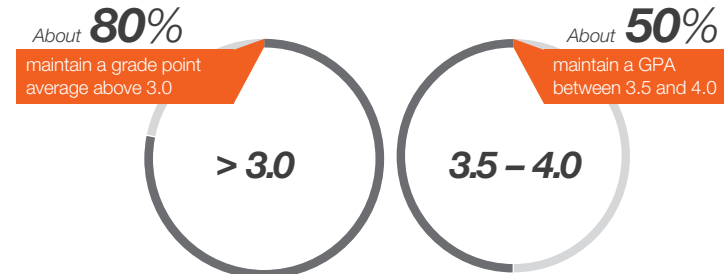
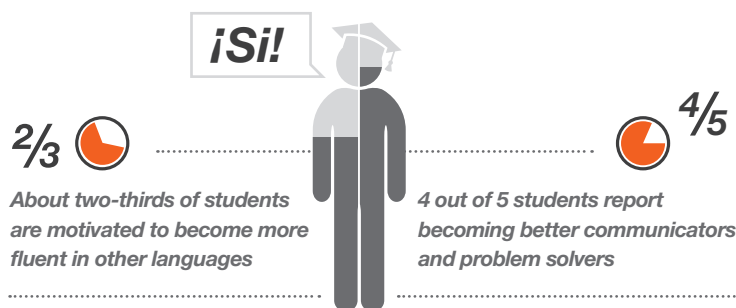
Sign up!

Ask your teacher for the tour number and use one of the following methods:

	Online: eftours.com/enroll
	Phone: 800-665-5364
	Mail: Send in your Enrollment Form to: EF Educational Tours One Education Street Cambridge, MA 02141

We prepare students for long-term success.

A nationwide survey conducted by AdvancED, an organization dedicated to education quality, asked thousands of students who had traveled with EF Educational Tours how the experience impacted them following high school. What we discovered is that traveling transforms students' lives—exactly what teachers and parents have been telling us all along.



Interact with us at eftours.com/connect or find us on:

